

## A One-Stop Orchestration Platform for Optimizing Legacy Services

Unlocking legacy data and logic for use across the corporation is a critical need in today's dynamic business environment. The proven family of Attachmate® Verastream® integration servers has been widely successful in this endeavor.

### Taking Integration One Step Further

To fully make use of legacy-based services—and to do so in the most agile way—you need a structured, reusable, and portable tool for adding necessary business context. That's why Attachmate is offering Verastream Process Designer. It's a complete mid-tier orchestration platform that lets you apply business rules and process management to ensure you get the most from your legacy services.

Verastream Process Designer lets you match your IT systems to your company's needs. You get a fast, simple way to orchestrate services, including legacy services, so you can create and control necessary business processes—all through the use of open and market-leading standards.

A tool designed for those who understand granular services, it enables you to add the necessary governing controls and processes before distributing the services for wider enterprise use. Whether your business need is a web portal, a packaged application, or enterprise-wide business process management platform, Verastream Process Designer can provide a repeatable way to create and tailor legacy services and ensure they are safe for broad use.

### Product Highlights

Here are some Verastream Process Designer specific advantages:

- A powerful intuitive design studio lets you mix and match legacy services with new initiatives, to create enterprise-rich applications.
- A modern best-practice approach covers orchestration, deployment, and the QoS requirements during runtime operation.
- Complete standards compliance ensures protection from obsolescence and portability across platforms, operating systems, environments, and products whenever needed.

The bottom line for you? With Verastream Process Designer, you can create business processes that span services and human activities.

### How Does Verastream Process Designer Work?

Verastream Process Designer includes a graphical design studio and an enterprise-scalable runtime engine. The design studio provides a visual way to model and orchestrate services for simple, one-step deployment to the runtime server. And because processes and orchestrations are created as pure standard v2.0 BPEL, use of the orchestrations beyond the provided runtime is always possible, too.

### Design Studio: Benefits

The Verastream design studio is a rich and intuitive environment to leverage the BPEL open standard. Here are some of its benefits:

- Visual orchestration of activities with an intuitive drag-and-drop workspace.
- Creation of pure WS-BPEL v2.0 orchestrations.

### Key Features

#### Verastream Process Designer

With Verastream Process Designer, you can orchestrate services using the market's best practices to yield agile end-to-end control. Here are some of the solution's key features:

- Rich and intuitive graphic studio for building and editing business processes.
- Drag-and-drop support for using external services and all BPEL v2.0 activities.
- WS-Security support to participate in secure enterprise class applications.
- Rich wizards for handling typically complex BPEL activities.
- One-button deployment to Verastream runtime services.
- Design-time debugging using deployed Verastream processes.
- Scalable enterprise-class runtime services.

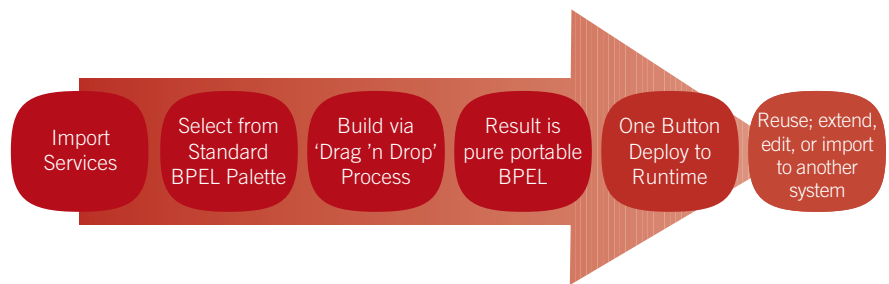
#### WS-BPEL v2.0

Because Verastream Process Designer uses WS-BPEL as an underlying technology, you benefit from these WS-BPEL features:

- Support for asynchronous and external events.
- Ability to handle short- or long-running processes.
- Compensation controls for long-running processes.
- Handling of data operations by industry-standard XPath and XML.
- Securing application access with WS-Security.



- Wizards to simplify the complications associated with service invocation.
- Ability to save, test, and debug runtime services.
- One-step push-button deployment to the runtime server.



**Runtime Server: Benefits**

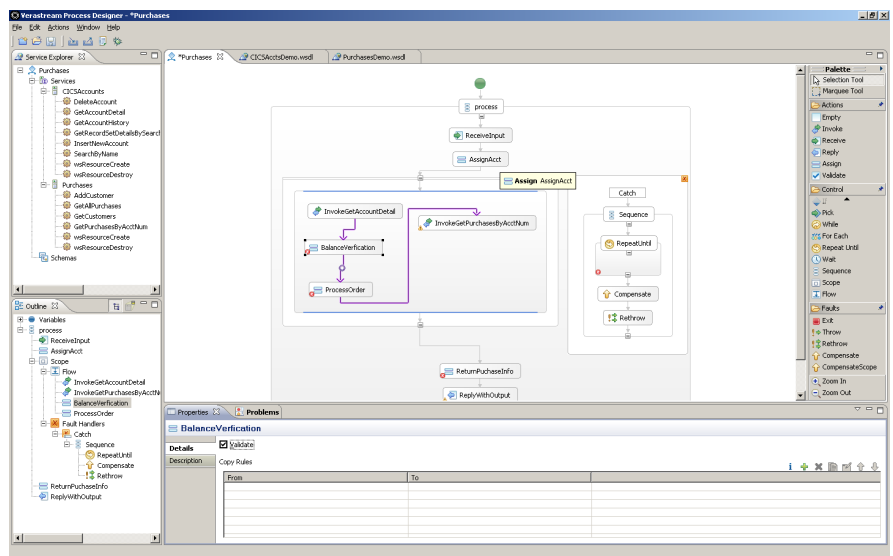
The Verastream runtime server can scale to meet business needs of the enterprise running standards-based implementations. Here are some of its benefits:

- Scalability across multi-processor servers.
- Ability to run on any of the popular IT platforms.
- Simultaneous support for multiple operating systems and architectures.
- Ability to provide debugging information to the design studio to meet project needs.
- Efficient handling of all types of BPEL activities (short- or long-running processes).

Together, these product components give you a repeatable, reliable way to tailor integration services for use by end-user applications.

With Verastream Process Designer, you get rapid ROI with guaranteed longevity and reuse. It adds value as a bridge between the tactical needs of a project and the long-term strategic goals in your enterprise. All this comes with support by Attachmate, a company with nearly 30 years of experience helping IT organizations meet tough technical challenges with confidence.

This graphic shows how simple it can be to orchestrate and deploy legacy services.



Verastream Process Designer provides an intuitive studio for building business processes.

**TECHNICAL SPECIFICATIONS**

**System Requirements**

- Verastream Development Kit
  - Microsoft Windows 7
  - Microsoft Windows Vista
  - Microsoft Windows Server 2008
  - Microsoft Windows XP Professional
- Verastream Runtime Server
  - Solaris for SPARC platform
  - Red Hat Enterprise Linux for Intel X86 platform
  - Microsoft Windows 2003
  - Microsoft Windows Server 2008



**Corporate Headquarters**  
 1500 Dexter Avenue North  
 Seattle, Washington 98109  
 TEL 206 217 7500  
 800 872 2829  
 FAX 206 217 7515

**EMEA Headquarters**  
 The Netherlands  
 TEL +31 172 50 55 55  
 FAX +31 172 50 55 51

**Asia Pacific Headquarters**  
 Australia  
 TEL +61 3 9825 2300  
 FAX +61 3 9825 2399

**Latin America Headquarters**  
 Mexico  
 TEL +52 55 9178 4970  
 FAX +52 55 5540 4886

WEB [attachmate.com](http://attachmate.com)  
 E-MAIL [info@attachmate.com](mailto:info@attachmate.com)

For regional office information, visit [www.attachmate.com](http://www.attachmate.com).